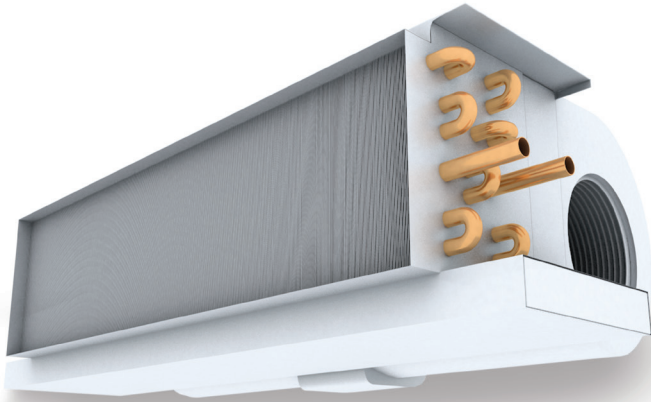




## Unilux Horizontal Fan coils

Full featured fan coils for concealed application.

### Product Specifications and Technical Data



### Product Description

The ideal in-suite HVAC solution for high rise construction, Unilux delivers top performance in a compact and flexible, easy to install product that is only 11" thick. Easily concealed in a drop ceiling or boxed in drywall location, the Unilux product has been engineered for apartments, condos, seniors living establishments and hotels. The Unilux HFC produces up to 1200 cfm.

- Optional airflow configurations (front supply, bottom supply, rear return or bottom return) to meet multiple design applications.
- Outside air connections are available.

### Approvals

Meets standard c22.2, no113 and ul1812.

### Key Features

- PSC or ECM motors available
- 350 to 1200 cfm
- Complete with WIFI enabled controller
- Variety of valve packages available

### Cabinet

Galvanized steel construction, lined with 1" fiberglass insulation. Cabinet dimensions – see table.

### Mounting

Horizontal mounting, suspended above ceiling or mounted with access panel. Ceiling mounting kits available.

### Blowers

Blowers are single inlet centrifugal impeller types with forward curved blades.

### Motors

Unilux has designs for either Permanent Split Capacitor (PSC) motors or Electronically Commutated Modulation (ECM) motors. These motors are IP-44, shielded bearing, high efficiency types with internal thermal overload protection. Motors meet CSA and UL.

### Electrical Requirements

115 vac, 60 hz, 155 watts

### Wall Thermostat

- Large, clear digital display with a blue backlight
- Display shows:
  - Current temperature
  - Current humidity
  - Set temperature
  - Current date and time
  - Battery status
  - Fan mode (Auto, Low, Med, Hi, Off)
  - Operation mode (Heat, Cool, Vacation, Off)
  - Program: 1, 2, 3, 4
- Wired to unit controller for manual inputs
- Battery back-up

### Warranty

Limited 2 year warranty.



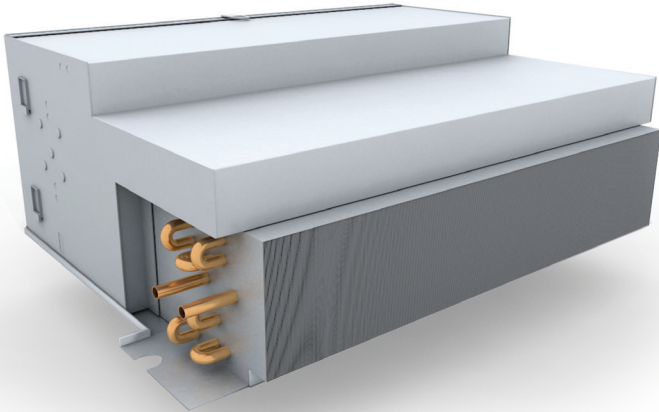


## Unilux Horizontal Fan coils

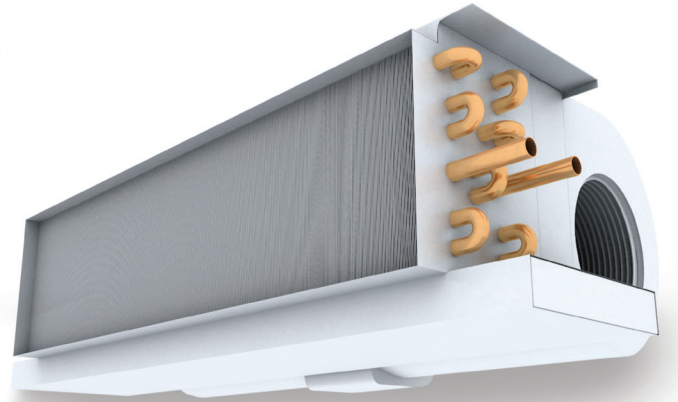
Full featured fan coils for concealed application.

### Product Specifications and Technical Data

#### Plenum



#### No-Plenum



#### Dimensions

| Nominal CFM | Width          | CHY Depth     | CPY Depth | CHY Height   | CPY Height    |
|-------------|----------------|---------------|-----------|--------------|---------------|
| 350         | 25-1/4" (641)  | 17-1/2" (445) | 20" (508) | 8-3/4" (222) | 10-1/2" (267) |
| 450         | 31-1/4" (794)  | 17-1/2" (445) | 20" (508) | 8-3/4" (222) | 10-1/2" (267) |
| 600         | 36-1/4" (921)  | 17-1/2" (445) | 20" (508) | 8-3/4" (222) | 10-1/2" (267) |
| 800         | 43-1/4" (1099) | 17-1/2" (445) | 20" (508) | 10" (254)    | 10-1/2" (267) |
| 1000        | 57-1/4" (1454) | 17-1/2" (445) | 20" (508) | 10" (254)    | 10-1/2" (267) |
| 1200        | 65-1/4" (1657) | 17-1/2" (445) | 20" (508) | 10" (254)    | 10-1/2" (267) |

#### Capacity

| Nominal CFM | Cooling |                          | Heating |                            |
|-------------|---------|--------------------------|---------|----------------------------|
|             | Rows    | Total Capacity Range MBH | Rows    | Heating Capacity Range MBH |
| 350         | 3       | 8.3 - 10.2               | 2       | 10.7 - 17.5                |
| 450         | 4       | 12.9 - 15.8              | 2       | 16.7 - 28.6                |
| 600         | 4       | 17.5 - 22.0              | 2       | 24.3 - 40.8                |
| 800         | 4       | 21.6 - 27.0              | 2       | 30.0 - 49.5                |
| 1000        | 4       | 25.8 - 33.2              | 2       | 38.9 - 64.8                |
| 1200        | 4       | 33.2 - 42.3              | 2       | 48.4 - 81.0                |

MANUFACTURED IN CANADA